

# Multifunctional Products and Printers for Healthcare

Convenience and control  
customized for Healthcare





## Transform your healthcare workflows

As healthcare becomes more accountable, you have never been more pressured to boost productivity and streamline your HIPAA compliance processes. RICOH® introduces its next generation of healthcare printing devices with a built-in locking-tray and security firmware to help accelerate your innovation. Learn how our printing devices and healthcare business services can help you optimize workflow efficiency in healthcare environments ranging from acute care to admissions, pharmacies and nursing stations with limited space.

### Key Benefits

- Avoid workflow interruptions by printing on regulated media (e.g., prescription forms) and non-regulated media with the same printing device
- Maximize productivity with a unique multifunction printer that can safeguard regulated media across print, copy and fax modes
- Install almost anywhere thanks to a small footprint and low profile allowing the device to fit below a shelf and into other tight spaces
- Add optional paper feed units (locking or non-locking) to increase total paper capacity up to 1,600 sheets

# Unlock your true productivity

## FIND THE RIGHT HEALTHCARE BUSINESS PARTNER

As both the manufacturer of your locking-tray hardware and developer of your locking-tray security firmware, Ricoh uniquely tailors healthcare printing devices to help you optimize your HIPAA compliance workflows—today and in the future as you face changing regulations and new potential threats. Additionally, Ricoh Healthcare Business Services can help you reach your goals faster so you can spend more time caring for your patients, less time managing your printing workflows.

## GAIN FREEDOM OF DEPLOYMENT

You may find it difficult or impossible to designate unique secure locations to process regulated media, particularly, preprinted prescription forms. With a built-in locking tray, you can deploy a Ricoh Healthcare Printing Device where it makes the most sense to streamline your workflow. Process jobs with both regulated media and non-regulated media on a single device instead of limiting print jobs with regulated media to designated devices tucked away behind locked doors.

## TAKE ON INCREASED WORKLOADS

Spikes in patient flow do not have to disrupt your workflows. Or perhaps you need to increase the workload for a particular print device. With Ricoh, convert your print station into a dynamic hub of productivity. Configure Ricoh Healthcare Printing Devices to handle large workloads with optional paper feed units that can increase total paper capacity up to 1,600 sheets. Added paper trays can be locking or non-locking—depending on what makes the most sense for your workflows.



Low-profile Ricoh Healthcare Printers don't need a big footprint to power through heavy monthly workloads with professional speed, quality and reliability



Increase total paper capacity up to 1,600 sheets

# How it works

Explore key innovations on Ricoh Healthcare Printing Devices to help you thrive in critical healthcare environments.

## LOCKING TRAY HARDWARE

A standard built-in locking tray and optional additional locking trays help to secure regulated stock such as pre-printed prescription forms. Maximum paper capacity: 1,600 sheets.

## LOCKING TRAY SECURITY FIRMWARE

Advanced security firmware helps to safeguard regulated media from theft and unauthorized viewing when:

- In copy mode: Prevents the ability to see and select the secure locking tray from the Operation Panel and Web Image Monitor (remote management tool).
- Print, copy and fax modes (on Ricoh healthcare multifunction printers): Disables access to the secure locking tray for the Auto Tray Switching function, which might otherwise take paper from the secure locking tray if a non-locking tray were to become empty during a job
- All modes: Disables access to the secure locking tray by the local hard drive.
- All modes: When printing from a mobile device or storage device such as a USB drive, access to the locking tray is disabled.
- All modes: With an optional or standard HDD installed, automatically overwrites latent images on the hard drive via DataOverwriteSecurity System (DOSS).

## PORTABLE PRINT CONFIGURATIONS

Store and export your device settings to an SD card so you can configure a different device quickly and easily.



"Secure Tray" is grayed out and inaccessible when in copy mode.



# Empower your modern workstyle

## COST-EFFECTIVE OWNERSHIP, SIMPLE MAINTENANCE

When you combine print jobs with both regulated and non-regulated media on a single printer or MFP, you can gain significant cost savings in many areas. Via simple print management tools, limit your healthcare personnel to print only what they need when they need it. Also, set limits for total print volumes per user, workgroup or department. Save time and costs with maintenance that is so easy, no training is required for normal tasks such as replacing toner or other consumables.

## CONSERVE ENERGY AND SAVE PAPER

Complete your document jobs without compromising your eco-friendly commitment. Save paper with automatic, double-sided printing and eliminate printing blank pages. Conserve energy with pre-set on/off settings, sleep mode and the ECO-Night Sensor (on printers only), which can automatically turn off your device during the night. Ricoh's healthcare printing devices meet EPEAT® Silver\* criteria, and are certified with the latest ENERGY STAR® specifications. Plus, you can recycle toner cartridges through Ricoh's Cartridge Return Program to help maintain a low environmental impact.

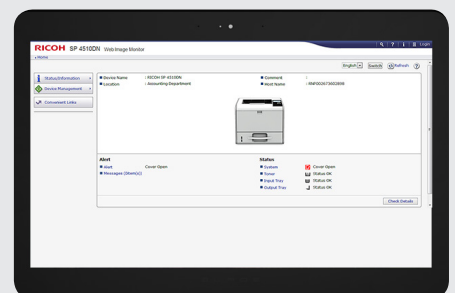
\*EPEAT Silver rating is applicable only in the USA

## COLLABORATE AND SHARE INFORMATION EASILY

Connect to and work in the cloud and take your information with you. On Ricoh Healthcare MFPs, use the optional Integrated Cloud Environment (ICE) service to print from, or scan to, apps like DocumentMall™, Evernote™, Dropbox™ or Google Drive™, all without using expensive on-site servers, system integration or software updates. Also store and access your documents in the places you prefer for convenient anytime sharing.

## MONITOR YOUR PERFORMANCE

It's easy to say you're saving money and increasing efficiency. It's another thing to prove it. Use Ricoh's Web Image Monitor to check system status, change settings, manage job queues and expedite maintenance right from the desktop. You can even assign up to 1,000 user codes to track volumes and trends by individual users, and leverage the information to improve print behavior. Need to manage multiple devices? Then install Ricoh's free management utility Device Manager NX Lite to manage up to 250 devices. Simplify installation, configuration and monitoring of multiple networked devices.



# Healthcare Printing Devices

SYSTEM HIGHLIGHTS

Build your healthcare printer fleet with Ricoh innovative printers and multifunction printers that offer everyday convenience and security features to accommodate specific healthcare requirements. Choose the system that best fits the unique demands of your organization.

## SP 4510DNTE with Locking Tray and Security Firmware

Black and White Printer

*Smart, energy-efficient solution to help protect regulated media*

- Prints up to 42 ppm
- 1200x1200 dpi max print resolution
- Paper capacity up to 1,600 pages
- Standard automatic double-sided printing
- Easy-to-read, four-line-LCD panel



## SP 4510SFTE with Locking Tray and Security Firmware

Black and White Multifunction Printer (MFP)

*Help to protect regulated media across multiple MFP modes*

- Prints up to 42 ppm, copy, scan, fax
- 1200x1200 dpi max print resolution
- Paper capacity up to 1,600 pages
- Standard automatic double-sided printing
- Tilting 4.3" color touch panel with shortcuts



### Ricoh Printers/MFPs for Healthcare

Device Type	SP 4510DNTE	SP 4510SFTE
	Printer	MFP
Built-in Locking Paper Tray	■	■
Locking Tray Security Firmware	■	■
Portable Print Configuration	■	■
Locked Print	■ *	■ *
DataOverwrite Security System	■ *	■ *
Hard Disk Drive Encryption	■ *	■ *
Optional 250-Sheet Locking Tray	■	■
Optional 500-Sheet Locking Tray	■	■

\*With optional hard disk drive (HDD).

# RICOH SP 4510SFTE

## SYSTEM SPECIFICATIONS

### Engine Specifications

SP 4510SFTE	Part # 407920
Configuration	Desktop
Technology	LED
Color/B&W	Black & White
Printing Process	Electro-photographic printing
Scanning Element	CCD
Toner Type	Dry, single component
B&W Print Speed (Letter)	42 ppm
Maximum Monthly Volume	Up to 10,000 prints
Maximum Monthly Duty Cycle	150,000 prints
First Page Out Time	5.1 seconds
Warm-up Time	14 seconds
Recovery from Sleep Mode	9.2 seconds
Standard Paper Capacity	1 x 500-Sheet Tray + 100-Sheet Bypass Tray
Maximum Paper Capacity	1,600 sheets
Standard Output Capacity	250 sheets
Supported Paper Sizes	Paper Tray: 3.94" x 5.82" – 8.5" x 14" (100 x 148 – 216 x 356 mm) Bypass Tray: 2.37" x 5.0" – 8.5" x 35.43" (60 x 127 – 216 x 900 mm)
Supported Paper Weights	All Trays: 14 – 43 lb. Bond/90 lb. Index (52 – 162 g/m <sup>2</sup> ) Duplex: 14 – 43 lb. Bond/90 lb. Index (52 – 162 g/m <sup>2</sup> )
Supported Paper Types	Plain, Recycled, Thick, OHP (Transparency), Letterhead, Preprinted and Envelopes Automatic (standard)
Duplexing	616 W
Power Consumption (Operating)	Less than 1 W
Power Consumption (Sleep Mode)	1.756 kWh/week
Typical Electricity Consumption (TEC)	120 V, 60Hz, 10A
Power Requirements	16.5" x 16.8" x 19" (419 x 427 x 484 mm)
Dimensions (WxDxH)	50.6 lbs. (23 kg)
Weight	Certified
ENERGY STAR	EPEAT Silver

### Copy Specifications

Copy Resolution	Up to 600 x 600 dpi
Document Feeder Type	Automatic Reversing Document Feeder (ARDF)
Document Feeder Capacity	50 sheets
Document Feeder Original Size	8.5" x 14" – 5.5" x 8.5" (A4 – A6), Custom: up to 8.5" x 35.43"
Document Feeder Paper Weight	Simplex: 14 – 34 lb. Bond (52 – 128 g/m <sup>2</sup> ) Duplex: 16 – 28 lb. Bond (60 – 105 g/m <sup>2</sup> ) Exposure glass: 8.5" x 11.7" (216 x 297 mm)
Maximum Original Size	ADF: One-sided originals: 8.5" x 23.6" (216 x 600 mm), Two-sided originals: 8.5" x 14" (216 x 356 mm)
Maximum Copy Quantity	99 copies
Preset Reduction & Enlargement Ratios	65%, 78%, 93%, 129%, 155%
Zoom Range	25% to 400% in 1% increments

### Copier Features

ID Card Copy; Auto/Manual Density Control; Auto Start; Batch Mode; Mixed Size Originals; Copy Mode – Text, Text/Photo and Photo, Generation Copy, Pale; Combine Pages; Margin Adjustment; Auto Tray Switching; Image Rotation; Electronic Sort; Job Program (25); User Codes (1,000)

### Print Specifications

Processor Speed	533 MHz
Memory (Standard/Maximum)	1 GB/1.5 GB RAM
Hard Disk Drive	320 GB (optional)
Print Resolution	Up to 1200 x 1200 dpi

Printer Languages	Standard: PCL6/5e, Adobe® PostScript®3™, PDF Direct Optional: XPS
Connection Type	Standard: Gigabit Ethernet (1000/100/10BASE-T), USB 2.0, USB 2.0 Host, SD Card Slot Optional: IEEE1284, IEEE802.11a/b/g/n PCL6: 45 fonts, PCL5: 45 fonts + International fonts 13 fonts, PostScript3: 136 fonts
Font Support	TCP/IP (IPv4, IPv6)
Network Protocols	Windows XP/Vista/7/8/1/Server2003/2008/2008R2/2012/2012R2, MacOS (X10.5 or later) PS only, UNIX filters for Sun Solaris, HP-UX, Red Hat Linux, SCO OpenServer, IBM AIX; SAP R/3; Citrix Presentation Server 4.5/Citrix XenApp 5.0, 6.0, 6.5
Supported Operating Systems	@Remote, SmartDeviceMonitor, Device Manager NX, Web SmartDeviceMonitor, Web Image Monitor
Device Management Utilities	Smart Device Print & Scan App
Mobile Printing	

### Other Print Features

Scheduled Print\*, Auto Continue, Store and Skip Errored Job, Classification Code, PDF Direct Print, Sample/Hold/Stored and Locked Print\*, WSD Printer, Unauthorized Copy Prevention, Poster Print, Collate, Toner Saving Mode

\*Hard disk drive required.

### Controller Options

Hard Disk Drive Option Type M6	Part # MX407222RA
Memory Unit Type M 1.5 GB	Part # 007167MIU
OCR Unit Type M2	Part # 4116605
Browser Unit Type M6	Part # 407225
File Format Converter Type E	Part # 414007
XPS Direct Print Option Type M6	Part # 407343
VM Card Type W	Part # 407218
IEEE802.11a/b/g/n Interface Unit Type O	Part # 407113
IEEE 1284 Interface Board Type A	Part # 411699
Copy Data Security Unit Type G	Part # 416391
Optional Counter Interface Unit Type A	Part # 413012

### Scan Specifications

Scanner Resolution	Color and B&W: up to 600 dpi TWIN: up to 1200 dpi
Scanning Speed (Letter)	B&W: up to 32 ipm, Color: up to 31 ipm
Platen Size	Up to 8.5" x 11" (216 x 297 mm)
Maximum Scanning Size	Up to 8.5" x 23.6" (216 x 600 mm)
Scan Modes	Text, Text/Line Art, Text/Photo, Photo, Glossy Photo Color (26 bit), Gray Scale (8 bit)
File Formats	JPEG, Single/Multi Page TIFF, PDF, High Compression PDF, PDF/A; OCR*
Scan-To Modes	Scan-to-Email (with LDAP support); Scan-to-Folder (SMB/FTP); Scan-to-URL; Network TWIN, Scan-to-Media (USB/SD); WSD Scanner
Scan Protocols	Network: TCP/IP; Email: SMTP, POP3, IMAP4; Scan-to-Folder: SMB, FTP, WSD Scanner

\*OCR option required.

### Document Server Specifications\*

Capacity	38 GB (shared with other functions)
Maximum Stored Documents	3,000 documents
Maximum Pages (per document)	1,000 pages
Maximum Pages (all stored documents)	9,000 pages

\*Hard disk drive required.

### Facsimile Specifications

Fax Resolution	Up to 200 dpi
Fax Scanning Speed w/ARDF	22-spm (Letter)
Modem Speed	33.6 kbps with auto fallback
Fax Compression Method	MH, MR, MMR, JBIG
SAF Memory Size	4 MB (approximately 320 sheets)
Transmission Speed	G3: 2 seconds per page (JBIG Compression)
Quick Dials	1,000 standard, 2,000 with HDD
Group Dials	100 groups
Standard Fax Features	Dual Access, Duplex Reception, 12-Hour Backup, LAN-Fax, Internet Fax (T.37), IP Fax (T.38), Fax Forwarding to E-Mail/HDD/Folder, PSTN, PBX

### Security Features

Administrator and User Authentication\*, User Lockout, Auto Logout, Menu Protect, Data Encryption (Address Book/User Authentication Information/Job Logs/Temporary Stored Document/Network Interface Settings/System Settings), Network Security via TCP/IP Access Control, Encrypted communications using SSL/TLS, IPsec, or IEEE 802.1X; SMNPv3, IPP Authentication, Kerberos Authentication Encryption, Wireless LAN Security (WEP, WPA2/ WPA2-PSK), Protect document data with Locked\* and Stored Print\*, Unauthorized Copy Prevention, Compulsory Security Stamp, HDD Data Overwrite\* and Encryption\*  
\*Hard disk drive required.

### Hardware Options

Paper Feed Unit PB1060	Part # 407230
Paper Feed Unit PB1060TE	Part # 407932 (Locking)
Paper Capacity	250 sheets
Supported Paper Sizes	3.94" x 5.82" – 8.5" x 14" (100 x 148 – 216 x 356 mm)
Supported Paper Weight	14 – 43 lb. Bond/90 lb. Index (52 – 162 g/m <sup>2</sup> )
Dimensions (WxDxH)	14.6" x 15.4" x 3.7" (370 x 392 x 95 mm)
Weight	9.04 lbs. (4.1 kg)
Paper Feed Unit PB1070	Part # 407229
Paper Feed Unit PB1070TE	Part # 407934 (Locking)
Paper Capacity	500 sheets
Supported Paper Sizes	3.94" x 5.82" – 8.5" x 14" (100 x 148 – 216 x 356 mm)
Supported Paper Weight	14 – 43 lb. Bond/90 lb. Index (52 – 162 g/m <sup>2</sup> )
Dimensions (WxDxH)	14.6" x 15.4" x 4.9" (370 x 392 x 125 mm)
Weight	9.92 lbs. (4.5 kg)
Adjustable Height Cabinet Type G	Part # 161200
Supports all SP 4510SF configurations	
Dimensions (WxDxH)	17.8" x 19.4" x 21.7" (453 x 491.5 x 552 mm)
Weight	42 lbs.
Tall cabinet Type L	Part #52511
Configure with main unit only or with one optional Paper Feed Unit.	
Dimensions (WxDxH)	14.6" x 15.4" x 2.05" (371 x 391 x 520 mm)
Weight	30.8 lbs. (14 kg)
Medium Cabinet Type M	Part # 52501
Configure with main unit plus any two optional Paper Feed Units.	
Dimensions (WxDxH)	14.6" x 15.4" x 14.6" (371 x 391 x 371 mm)
Weight	24.2 lbs. (11kg)

### Consumables & Yields

	Yield	Part #
Print Cartridge SP 4500HA	12,000 pages*	407316
Print Cartridge SP 4500A	6,000 pages*	407319
Print Cartridge SP 4500LA	3,000 pages*	407321
Photo Conductor Unit SP 4500	20,000 pages	407324
Maintenance Kit SP 4500	120,000 pages	407329

\*Declared yield values in accordance with ISO/IEC 19752. Actual yields may vary based on images printed and other factors.

# RICOH SP 4510DNTE

## SYSTEM SPECIFICATIONS

### Engine Specifications

SP 4510DNTE	Part # 407924
Configuration	Desktop
Technology	LED
Color/B&W	Black & White
Printing Process	Electro-photographic printing
Toner Type	Dry, single component
B&W Print Speed (Letter)	42 ppm
Maximum Monthly Volume	10,000 prints
Maximum Monthly Duty Cycle	150,000 prints
First Page Out Time	5 seconds
Warm-Up Time	17 seconds
Print Resolution	Up to 1200 x 1200 dpi
Standard Paper Capacity	1 x 500-Sheet Tray + 100-Sheet Bypass Tray
Maximum Paper Capacity	1,600 sheets
Standard Output Capacity	250 sheets
Supported Paper Sizes	Paper Tray: 3.94" x 5.82" – 8.5" x 14" (100 x 148 – 216 x 356 mm) Bypass Tray: 2.37" x 5.0" – 8.5" x 35.43" (60 x 127 – 216 x 900 mm)
Supported Paper Weights	All Trays: 14 – 43 lb. Bond/90 lb. Index (52 – 162 g/m <sup>2</sup> ) Duplex: 14 – 43 lb. Bond/90 lb. Index (52 – 162 g/m <sup>2</sup> )
Supported Paper Types	Plain, Recycled, Thick, OHP (Transparency), Letterhead, Preprinted and Envelopes
Duplexing	Automatic (standard)
Power Consumption (Operating)	561.7 W
Power Consumption (Sleep Mode)	Less than 1 W
Typical Electricity Consumption (TEC)	1.752 kWh/week
Recovery from Sleep Mode	9.9 seconds
Power Requirements	120 V, 60Hz, 10A
Dimensions (WxDxH)	14.6" x 15.4" x 12.0" (370 x 392 x 306 mm)
Weight	34.2 lbs. (15.5 kg)
ENERGY STAR	Certified
EPEAT	Silver

### Controller Specifications

Processor Speed	533 MHz
Memory (Standard/Maximum)	512 MB/1 GB RAM
Hard Disk Drive	320 GB (optional)
Maximum Stored Documents	950 files (HDD required)
Maximum Stored Pages	9,000 pages (HDD required)
Connection Type	Standard: Gigabit Ethernet (1000/100/10BASE-T), USB 2.0, USB 2.0 Host Optional: IEEE1284, IEEE802.11a/b/g/n

Printer Languages	Standard: PCL6/5e, Adobe® PostScript®3™, PDF Direct Optional: IPDS*, XPS
Font Support	PCL6: 45 fonts, PCL5: 45 fonts + International fonts 13 fonts, PostScript3: 136 fonts, IPDS: 108 fonts (optional) TCP/IP (IPv4, IPv6)
Network Protocols	Windows XP/Vista /7/8/8.1/Server2003/2008/2008R2/2012/2012R2, MacOS (X10.5 or later) PS only; UNIX filters for Sun Solaris, HP-UX, Red Hat Linux, SCO OpenServer, IBM AIX; SAP R/3; Citrix Presentation Server 4.5/Citrix XenApp 5.0, 6.0, 6.5; IBM iSeries/AS/400***
Supported Operating Systems	
Device Management Utilities	@Remote, SmartDeviceMonitor, Device Manager NX, Web SmartDeviceMonitor, Web Image Monitor

\*Hard disk drive and optional memory required.  
\*\*IPDS option required.

### Print Features

Scheduled Print\*, Auto Continue, Classification Code, PDF Direct Print, Sample/Hold/Stored and Locked Print\*, Unauthorized Copy Prevention, Poster Print, Collate, Toner Saving Mode

\*Hard disk drive required.

### Controller Options

Hard Disk Drive Option Type P1	Part # MX407348RA
Memory Unit Type N 1.0 GB	Part # 007150MIU
IEEE 802.11 Interface Unit Type O	Part # 407113
IEEE 1284 Interface Board Type A	Part # 411699
IPDS Unit Type P1	Part # 407349
VM Card Type W	Part # 407218
XPS Direct Print Option Type P1	Part # 407351

### Security Features

Administrator and User Authentication\*, User Lockout, Auto Logout, Menu Protect, Data Encryption (Address Book/User Authentication Information/Job Logs/Temporary Stored Document/Network Interface Settings/System Settings), Network Security via TCP/IP Access Control, Encrypted communications using SSL/TLS, IPsec, or IEEE 802.1X; SMNPv3, IPP Authentication, Kerberos Authentication Encryption, Wireless LAN Security (WEP, WPA2/ WPA2-PSK), Protect document data with Locked\* and Stored Print\*, Unauthorized Copy Prevention, Compulsory Security Stamp, HDD Data Overwrite\* and Encryption\*

\*Hard disk drive required.

### Hardware Options

Paper Feed Unit PB1060	Part # 407230
Paper Feed Unit PB1060TE	Part # 407932 (Locking)
Paper Capacity	250 sheets
Supported Paper Sizes	3.94" x 5.82" – 8.5" x 14" (100 x 148 – 216 x 356 mm)
Supported Paper Weights	14 – 43 lb. Bond/90 lb. Index (52 – 162 g/m <sup>2</sup> )
Dimensions (WxDxH)	14.6" x 15.4" x 3.7" (370 x 392 x 95 mm)
Weight	9.04 lb. (4.1 kg)
Paper Feed Unit PB1070	Part # 407229
Paper Feed Unit PB1070TE	Part # 407934 (Locking)
Paper Capacity	500 sheets
Supported Paper Sizes	3.94" x 5.82" – 8.5" x 14" (100 x 148 – 216 x 356 mm)
Supported Paper Weights	14 – 43 lb. Bond/90 lb. Index (52 – 162 g/m <sup>2</sup> )
Dimensions (WxDxH)	14.6" x 15.4" x 3.7" (370 x 392 x 125 mm)
Weight	9.92 lb. (4.5 kg)
Adjustable Height Cabinet Type G	Part # 161200
Supports all SP 4510DN configurations	
Dimensions (WxDxH)	17.8" x 19.4" x 21.7" (453 x 491.5 x 552 mm)
Weight	42 lbs.
Tall cabinet Type L	Part # 52511
Configure with main unit only or with one optional Paper Feed Unit.	
Dimensions (WxDxH)	14.6" x 15.4" x 21.7" (371 x 391 x 520 mm)
Weight	30.8 lbs. (14 kg)
Medium Cabinet Type M	Part # 52501
Configure with main unit plus any two optional Paper Feed Units.	
Dimensions (WxDxH)	14.6" x 15.4" x 14.6" (371 x 391 x 371 mm)
Weight	24.2 lbs. (11 kg)

### Consumables & Yields

	Yield	Part #
Print Cartridge SP 4500HA	12,000 pages*	407316
Print Cartridge SP 4500A	6,000 pages*	407319
Print Cartridge SP 4500LA	3,000 pages*	407321
Photo Conductor Unit SP 4500	20,000 pages	407324
Maintenance Kit SP 4500	120,000 pages	407329

\*Declared yield values in accordance with ISO/IEC 19752. Actual yields may vary based on images printed and other factors.