

Ricoh Aficio MP C3001/C3501  
and MP C4501/C5501  
Color Digital Imaging System  
Exceptional Color, Remarkable Productivity

**RICOH**



**secure**



**dynamic**



**advanced**



# Ricoh Aficio MP C3001/C3501 and MP C4501/C5501

**Versatile color in a secure, eco-friendly design.**

It's not enough for full-color multifunctional systems to offer vibrant image quality, high productivity and incredible versatility. Beyond high performance, today's users need environmentally-friendly solutions that offer security features and extensive choices for managing documents. The RICOH® Aficio® MP C3001/C3501 and MP C4501/C5501 deliver all this and more in a convenient, cost-effective design. Use these innovative systems to accomplish any critical task—from printing and copying to scanning and faxing, from finishing and distribution to color control and workflow execution. Each one helps fast-paced offices produce flawless documents securely and efficiently with more collaboration and less outsourcing.



# Powerful Efficient Secure Fast

## All-In-One Office Document Portals

With four models to choose from, the Ricoh Aficio MP C3001/C3501 and MP C4501/C5501 provide an extensive array of capabilities for fast-paced, results-oriented offices.

- Expect powerful multifunction performance with a complete lineup of printing, copying, scanning and faxing functionality on all four models.
- Manage any workflow with speed and precision. Choose from a broad selection of on-board document distribution tools, portable plug-and-play media, mobile widgets and a host of other document-delivery tools.
- Create compelling presentations, comps, spreadsheets, booklets, brochures and other documents in eye-catching color or crisp, detailed black & white.
- Print or copy on a variety of paper stocks and sizes, then add professional inline finishing to generate ready-to-use marketing, education and collaboration materials.

## Fast, High-Quality Output

Meet tough deadlines with exceptional speed and processing power.

- Keep more jobs in-house, printing or copying up to 55 pages-per-minute in both full-color and black & white.
- Process even the most complicated print jobs with ease. These systems offer controllers with blazing speed and substantial memory capacity, so users spend more time working and less time standing around waiting for documents.
- Accommodate local networking requirements and make life easier on IT. All four models offer a wide range of standard and optional interfaces as well as broad compatibility with Windows, Macintosh, Unix and AS/400 environments.

## Superior Hard Drive Security

Hard drives often contain confidential files. If left unprotected, they can be a target for hackers and thieves. Ricoh helps ensure your hard drive stays safe.

- Reduce the risk of anyone extracting sensitive documents from the hard drive, even after the system reaches end of life. The standard DataOverwriteSecurity System (DOSS) automatically overwrites the area of the hard drive used for image processing after the completion of each job, making it virtually impossible to recover documents. At the end of the system's useful life, the entire hard drive can be overwritten, which destroys the data before it leaves your location.
- Safeguard documents stored on the hard drive even if the drive is removed from the system. Standard HDD Encryption adds a powerful layer of security to certain stored files, encoding them for maximum defense against hackers.

## Optimize Document Security

All four models offer advanced security features designed to protect business-critical documents.

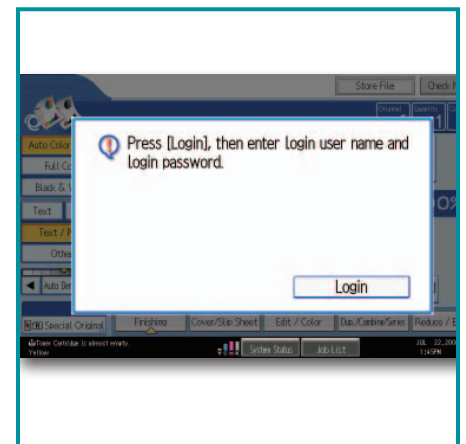
- Prevent unauthorized viewing of confidential files with Locked Print. Users must enter a password at the control panel before jobs are printed.
- Add high-quality color to your projects without the risk of misuse. A multi-layered approach to authentication lets you confirm user identity and control access to color printing and other functions.
- Defend against unauthorized network interceptions with encrypted PDF transmission, which protects data for Scan-to-Email and Scan-to-Folder functions.



The intuitive, full-color LCD Control Panel makes it easy for any user to access basic functionality or more advanced workflow tools.



Depend on these systems to deliver high-resolution color documents for marketing, education, training and collaboration.



Prevent unauthorized users from accessing these systems with a variety of user authentication methods.

# Ricoh Aficio MP C3001/C3501 and MP C4501/C5501

## Advanced Document Distribution

Ensure recipients around the world receive important documents. The Ricoh Aficio MP C3001/C3501 and MP C4501/C5501 make it easy to manage document distribution.

- Distribute hardcopy documents immediately with a variety of "Scan-to" functions. Scan-to-Email reaches multiple recipients instantly, while Scan-to-Folder can be configured to share and archive documents automatically.
- Reduce network traffic with Scan-to-URL, which saves scanned documents on the hard drive and allows recipients to access them through a secure hyperlink. This avoids the risk of clogging the network when sending large files.
- Put all your documents in your pocket with Scan-to-Removable Media, which lets you easily store scanned files on a USB clip drive or SD card.
- Convert hardcopy documents into High Compression PDFs using the JPEG 2000 image compression standard. Unlike other methods, the JPEG 2000 standard helps ensure file sizes are small and portable without compromising image quality.
- Handle fax workflows quickly and conveniently. Send or receive faxes electronically with Internet (T.37) faxing, send faxes directly from a PC (LAN faxing), or use IP (T.38) and Super G3 faxing for quick delivery to conventional fax numbers.
- Decrease fax errors with the ability to detect blank pages and allow users to preview faxes prior to transmission.
- Ensure that information gets to the intended recipient by automatically routing inbound faxes to an e-mail address or network folder.

## Professional Inline Finishing

Produce a diverse portfolio of attractive, ready-to-deliver documents using a full complement of finishing choices.

- Keep outsourcing to an absolute minimum for reports, plans and other essential documents. The Ricoh Aficio MP C3001/C3501 offers stapling with optional 500-sheet or 1,000-sheet Finishers, while the MP C4501/C5501 offers a 1,000-sheet or a 3,000-sheet Finisher.
- Create easy-to-read booklets with a 1,000-sheet Booklet Finisher for the MP C3001/C3501 or a 2,000-sheet Booklet Finisher for the MP C4501/C5501.
- Produce two- or three-hole punched documents that are ready for insertion in binders. All four systems offer optional hole punching.

## Promote Environmental Sustainability

- Reduce unnecessary output with Locked Print, as well as the User Account Limit feature, which allows administrators to set limits on output for individual users. Minimize wasted energy and paper, minimize the workload of IT managers and increase users' environmental awareness.
- Reduce paper consumption considerably with standard Automatic Stackless Duplexing, which produces two-sided booklets, brochures, agendas and more, with no additional user involvement.
- Ricoh has been an environmental leader for more than 30 years and remains committed to providing eco-friendly office solutions.



Reduce network traffic and transmit files more efficiently with Scan-to-URL, which stores documents on the system's hard drive, allowing recipients to view them via web browser.



Use these versatile devices to generate an extensive variety of full-color, professionally finished documents.



Ricoh was recently named one of the "Global 100 Most Sustainable Corporations in the World" for the sixth consecutive year.

# Dependable Accessible Versatile Exceptional

## Remarkable Energy Efficiency

**All four models continue a long-standing Ricoh commitment to promoting energy savings without compromising quality or productivity.**

- Use less power without changing workflow or inconveniencing users. The Ricoh Aficio MP C3001/C3501 warms up in 23 seconds and recovers from Sleep Mode in 13 seconds. The MP C4501 is ready to go in 22 seconds and recovers in 19 seconds or less (36 and 32 seconds for the MP C5501). The innovative induction heating fusing system heats up quickly, using less electricity to do the same work. All this leads to the lowest Typical Electricity Consumption (TEC) values in the industry for all four models (as of September, 2010)<sup>1</sup>.
- Get documents quickly and save energy with fast first-copy times. The MP C3001/C3501 delivers the first color copy in just 7.8 seconds or 4.9 seconds for black & white, while the MP C4501/C5501 provides a color copy in as little as 5.0 seconds and 3.1 seconds for black & white.

## Support Mobile Workers

**Mobile users often have no easy way to print important documents, even when traveling to branch offices. These systems give mobile users access to essential features without compromising security.**

- Print without device-specific drivers, special software or a LAN connection using the Ricoh HotSpot MFP option. This capability lets mobile users print directly from a laptop, handheld device or smart phone—including BlackBerry® and iPhone®.
- Save time and improve flexibility with the innovative Mail-to-Print capability. This allows users to print a PDF or JPEG attachment automatically by sending an e-mail directly to the system instead of connecting to a local network.
- Print JPEGs, TIFFs and PDFs directly from a USB drive or SD card right at the system. There is no need to open native applications or gain access to the LAN.

<sup>1</sup>Typical Electricity Consumption (TEC) Approach: A method of testing and comparing the energy performance of imaging equipment products which focuses on the typical electricity consumed by a product while in normal operation during a representative period of time. The key criteria of the TEC approach for imaging equipment is a value for typical weekly electricity consumption, measured in kilowatt-hours (kWh). Detailed information can be found in the "ENERGY STAR Qualified Imaging Equipment Typical Electricity Consumption Test Procedure" available at [www.energystar.gov/products](http://www.energystar.gov/products).



With fast warm-up and recovery times, these models save both time and energy.



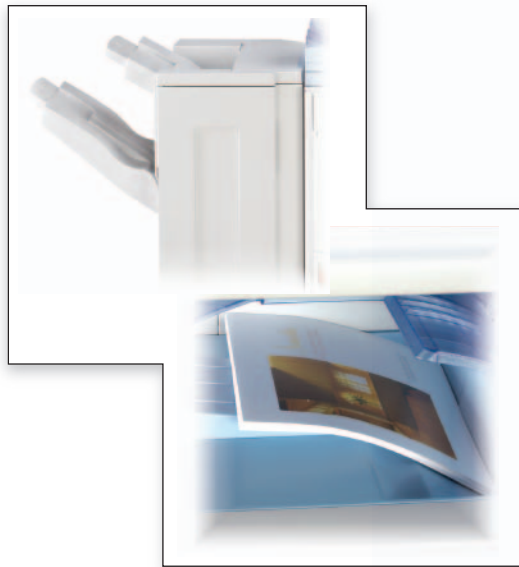
Print documents directly from a USB drive or SD card. Just plug in and print without connecting to the local network.



# Dynamic Color, Productivity and Efficiency

The Ricoh Aficio MP C3001/C3501 can be equipped with a **500-sheet** or **1,000-sheet Finisher** for traditional stapling, or a **1,000-sheet Booklet Finisher** that creates professional-quality booklets and offers optional hole-punching.

The MP C4501/C5501 can be equipped with a **1,000-sheet Finisher** or **3,000-sheet Finisher** for traditional stapling, or a **2,000-sheet Booklet Finisher** (shown) for professional-quality booklet-making. The 3,000-sheet Finisher and 2,000-sheet Booklet Finisher both offer optional hole-punching.



Use the **optional Side Output Tray** to keep output separate or the **optional Internal Shift-Sort Tray** to collate document sets when no finisher is selected.

Add a **Two-Tray Paper Bank** (shown) or the **2,000-sheet Tandem Large Capacity Tray (LCT)** for maximum versatility. The MP C3001/C3501 can also be configured with a One-Tray Paper Bank (Caster Table required). These options accept stocks up to 140 lb. Index (256 g/m<sup>2</sup>). Or add a **Cabinet Stand** if the standard paper supply meets your needs.

The **optional 125-sheet Inner One-Bin Tray** provides a cost-effective way to separate copy, print and fax output.



## Ricoh Aficio MP C3001/C3501 and MP C4501/C5501

The **standard 50-sheet (MP C3001/C3501)** or **100-sheet (MP C4501/C5501) Automatic Reversing Document Feeder** easily handles one- and two-sided originals up to 11" x 17".

The MP C4501A/C5501A feature a **Single Pass Duplexing Document Feeder** to scan both sides of a document automatically.



Choose the **optional 1,200-sheet Side Large Capacity Tray (LCT)** to boost maximum paper capacity to 4,400 sheets (with Tandem LCT).

Two front-loading **Standard Paper Trays** each hold 550 sheets. With the **100-sheet Bypass Tray**, total standard paper capacity is 1,200 sheets. Tray 2 can also be fitted with an option to feed envelopes right from the drawer.

# Ricoh Aficio MP C3001/C3501 and MP C4501/C5501

## Transform the Way You Work

Revolutionize document management with new tools that enable users to customize workflows, manage documents on the go and dramatically increase personal productivity.

- Take advantage of “widgets” to simplify complex workflows with App2Me. Download widgets to your desktop and execute them on any Ricoh MFP enabled with App2Me. No matter where you go, your experience with App2Me-enabled MFPs remains completely personalized for maximum convenience. Widgets can be created to combine, distribute, edit and create documents, as well as perform many other tasks automatically.
- Personalize scanning with Personal Paperless Document Manager (PPDM). This software allows users to customize MFP touch-screen menus directly from the PC, without involving IT. Intuitive icon-based selections at the MFP seamlessly integrate with powerful desktop software to enhance the user experience.
- Spend less time waiting with PDF Direct Print, which leverages Ricoh’s true Adobe® PostScript® 3™ option to print even complex PDFs efficiently using a simple drag-and-drop process. There is no need to open files in a viewer application.
- Enhance the usability of embedded software, such as GlobalScan NX, eCopy ShareScan and Reform PDC, with an optional USB keyboard that makes data entry quicker and more accurate.

## Enhanced Document Solutions

Transform the Ricoh Aficio MP C3001/C3501 and MP C4501/C5501 into powerful document portals. Choose from a long list of user-friendly, easy-to-integrate software solutions from Ricoh and many other innovative technology partners.

- Incorporate proven Ricoh solutions for document capture and distribution, storage and management, variable data printing, assessment and cost recovery, device management and print security. These offerings are designed to work with Ricoh MFPs, transforming them into true document portals.
- Leverage the smartest, most effective workflow tools and streamline every aspect of your organization with Ricoh. We partner with industry-leading technology innovators to make sure our MFPs can serve as on-ramps to an enormous selection of applications for content management and other business-critical activities.
- Develop customized applications for the Ricoh Aficio MP C3001/C3501 and MP C4501/C5501 using Embedded Software Architecture™, a Java-compatible Software Development Kit (SDK).



The optional keyboard makes data entry easier for embedded software applications, such as GlobalScan NX, eCopy ShareScan and Reform PDC.



Personal Paperless Document Manager (PPDM) lets users create unique workflows, combine multiple files in one PDF and convert scanned files into editable Microsoft® Office documents.



Solution partners extend the functionality of Ricoh MFPs to enhance your organization’s document-related workflow.

# SimpleReliableFlexibleSmart

## Reliable Paper Handling

**With a number of choices for paper handling, these systems give offices the ability to create an extensive range of documents.**

- Cut scanning time significantly and improve user convenience with the Single Pass Duplex Document Feeder, which scans both sides of a document automatically. (Available on Ricoh Aficio MP C4501A/ C5501A only.)
- Let users get creative with a wide range of paper stocks and sizes. These systems support very heavy paper for printing full-color proposals, postcards, flyers and more. The bypass tray expands paper handling with support for 12" x 18" paper and duplexing for sizes up to 11" x 17".
- Run mailings without outsourcing. Print envelopes and statement-size documents directly from the Paper Trays (requires option).
- Keep output from different users or functions separate with the Side Output Tray.
- Minimize paper loading for long print and copy tasks. These systems offer a total paper capacity of 4,400 sheets for fewer interruptions.
- Customize paper capacity to match your workflow by adding a Cabinet Stand, one additional paper tray (available on MP C3001/C3501 only), a Two-Tray Paper Bank, or a 2,000-sheet Tandem Large Capacity Tray (LCT). The 1,200-sheet Side LCT can be added with either the Two-Tray Paper Bank or Tandem LCT.

## Amazingly Vibrant Color

**These systems incorporate patented PxP™ toner and powerful print engines to deliver rich, bold color for every document.**

- Give client proposals, competitive bids, RFPs and business plans the sophisticated appearance they deserve. All four systems deliver superior color output with resolutions up to 1200 x 1200 dpi.
- Keep expensive outsourcing to a minimum. Instead, give your office or workgroup the capability to produce exceptional color documents in-house and on-demand with outstanding cost-efficiency.
- Energize your organization's image. These systems make it affordable to use color more often, which helps make documents more compelling, key messages more memorable, and your brand more striking.

## Control Color With Precision

**With the optional EFI Fiery™ Controller, users can leverage these productive MFPs to attain professional-grade color control and management.**

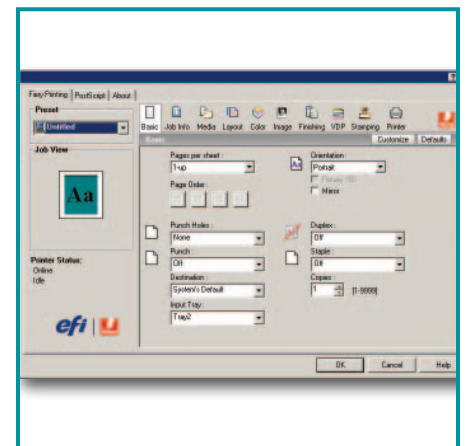
- Take full advantage of the print engines' outstanding color capabilities for graphic-intensive applications and accurate spot color matching.
- Fine-tune color output for application-specific needs. With the EFI Fiery™ Controller's built-in tools, you can achieve superior results for RGB, CMYK and even PANTONE® colors.
- Print complex color documents such as page layouts, concept drawings or proof sheets quickly, consistently and accurately with the additional firepower of a Fiery™ Controller.
- Control workflow, reprint jobs and even combine documents with the powerful Command WorkStation™ tool.



Control costs and speed turnaround by keeping color document creation in house.



Ricoh's PxP™ toner ensures vibrant color output for all of your business documents and is environmentally friendly.



The EFI Fiery™ Controller is ideal for users who require more sophisticated control over color workflows.

# Ricoh Aficio MP C3001/C3501 and MP C4501/C5501

## Ensure Accessibility for All

Ricoh makes it a priority to develop easy-to-use technology for everyone. Many of the features on the Ricoh Aficio MP C3001/C3501 and MP C4501/C5501 make them very user-friendly and help meet Section 508 requirements.

- Improve ease of use with the large, full-color W-VGA control panel. You can also use the Simplified Display feature, which shows fewer function keys and uses a larger screen font.
- Get animated, step-by-step instructions for routine tasks, such as clearing paper misfeeds or replacing toner.
- Accommodate all users with a convenient design. Toner cartridges can be replaced with one hand. Paper trays can be easily opened with an overhand or underhand grip. Also, the scanner and document feeder can be detached and placed on a desk, making every function accessible to seated users.
- Handle a long list of documents and device management tasks remotely. View detailed system information and network settings, and monitor supply status right from a standard Web browser.

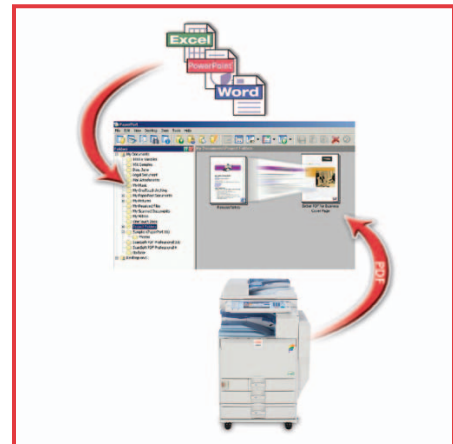


The detachable scanner option makes the MP C4501/C5501 completely accessible to seated users (stand not included; not available on MP C3001/C3501 or MP C4501A/C5501A).

## Innovative Document Management

The Ricoh Aficio MP C3001/C3501 and MP C4501/C5501 provide numerous capabilities designed to help you deal with documents on your own terms.

- Simplify archiving with the ability to turn scanned documents into searchable PDFs. This makes it easy for users to locate documents using a keyword search.
- Never retype another document. Sophisticated OCR (Optical Character Recognition) tools let you transform scanned hardcopy documents into editable Microsoft Word, Excel or PowerPoint files.
- Take advantage of easy-to-use Bates Stamping for case files and discovery documents in legal environments.
- Remove information from electronic documents with powerful redaction tools that completely eradicate the unwanted data, quickly and easily.
- Create fillable PDF forms, create sound files from scanned documents, combine pages created in different applications (e.g., Word and Adobe Photoshop) into a single document, and much more.



New PDF documents can be created by combining content from various applications.

## Ricoh Managed Document Services

Ricoh's Managed Document Services (MDS) is a powerful way to streamline your document management environment. MDS enables control of output-related costs and assets and optimizes the fleet. Through on-site and off-site services, MDS improves workflow, productivity and end-user experiences.

- Control expenses with Ricoh Aficio MP C3001/C3501 and MP C4501/C5501, which provide a powerful combination of high productivity, long-lasting reliability and low total cost of ownership (TCO).
- Consolidate copying, printing, scanning and document management into a single device, with a smaller footprint and one set of consumables.
- Place the right device for the right applications with these systems and others—all part of our extensive line of Ricoh products.

## The Total Green Office Solution



Ricoh continues its long-standing commitment to developing office solutions with environmentally friendly and superior energy- and supply-saving features, without compromising productivity.

# Ricoh Aficio MP C3001/C3501 and MP C4501/C5501

## System Specifications



### General Specifications

Specifications for MP C4501/C5501 are the same for MP C4501A/C5501A except where indicated

<b>Configuration</b>	Desktop Color Laser MFP
<b>Printing Process</b>	Dry Electrostatic Transfer with Dual Component Magnetic Brush Development; 4-Drum Method
<b>Scanning Technology</b>	1D Solid Scanning via CCD
<b>Output Speed (Copy/Print)</b>	MP C3001: 30-ppm BW & FC (LTR) MP C3501: 35-ppm BW & FC (LTR) MP C4501: 45-ppm BW & FC (LTR) MP C5501: 55-ppm BW & FC (LTR)
<b>Warm-Up Time</b>	MP C3001/C3501: 23 seconds MP C4501: 22 seconds MP C5501: 36 seconds
<b>Recovery from Sleep Mode</b>	MP C4501A: 24 seconds MP C5501A: 38 seconds
<b>First Copy Time (FC/BW)</b>	MP C3001/C3501: 13 seconds MP C4501: 19 seconds MP C5501: 32 seconds
<b>Copy Resolution</b>	MP C3001/C3501: 7.8/4.9 seconds MP C4501: 5.9/3.7 seconds MP C5501: 5.0/3.1 seconds
<b>Quantity Indicator</b>	600 dpi Up to 999 copies
<b>Document Feeder</b>	
<b>MP C3001/C3501</b>	Original Capacity: 50 sheets
<b>Automatic Reversing Document Feeder (ARDF)</b>	Original Size: 5.5" x 8.5" – 11" x 17" Paper Weight: Simplex: 11 – 34 lb. Bond (40 – 128 g/m <sup>2</sup> ) Duplex: 14 – 28 lb. Bond (52 – 105 g/m <sup>2</sup> )
<b>MP C4501/C5501</b>	Original Capacity: 100 sheets
<b>Automatic Reversing Document Feeder (ARDF)</b>	Original Size: 5.5" x 8.5" – 11" x 17", Paper Weight: Simplex: 11 – 34 lb. Bond (40 – 128 g/m <sup>2</sup> ) Duplex: 14 – 34 lb. Bond (52 – 128 g/m <sup>2</sup> )
<b>MP C4501A/C5501A</b>	Original Capacity: 100 sheets
<b>Single Pass Duplexing Feeder (SPDF)</b>	Original Size: 5.5" x 8.5" – 11" x 17" Paper Weight: Simplex: 11 – 34 lb. Bond (40 – 128 g/m <sup>2</sup> ) Duplex: 14 – 34 lb. Bond (52 – 128 g/m <sup>2</sup> )
<b>Paper Capacity</b>	Standard: 2 x 550 sheets + 100-sheet Bypass Tray, Maximum: 4,400 sheets (w/Tandem LCT + Side LCT)
<b>Standard Paper Sizes</b>	1st Paper Tray: 8.5" x 11" 2nd Paper Tray: 7.25" x 10.5" – 11" x 17", Envelopes (with option) Bypass: Up to 12" x 18", Envelopes Custom Sizes: Width: 3.5" – 12" (90-305mm), Length: 5.8" – 49.6" (148-1260mm); Over 600mm requires SP mode
<b>Standard Paper Weights</b>	Standard Trays: 16 – 68 lb. Bond/140 lb. Index (60 – 256 g/m <sup>2</sup> ) Bypass Tray: 16 – 80 lb. Bond/110 lb. Cover (60 – 300 g/m <sup>2</sup> ) Duplex Unit: 16 – 45 lb. Bond/90 lb. Index (60 – 169 g/m <sup>2</sup> )
<b>Paper Types</b>	Plain/recycled paper, laser printer qualified transparencies, labels, envelopes
<b>Auto Duplex Output Capacity</b>	Standard Standard (all): 500 sheets, Face Down Maximum: MP C3001/C3501: 1,625 sheets (w/1,000-sheet Finisher + 1 Bin Tray) MP C4501/C5501: 3,625 sheets (w/3,000 Sheet Finisher + 1 Bin Tray)
<b>Zoom Preset Reduction</b>	25% – 400% in 1% increments 93%, 85%, 78%, 73%, 65%, 50%, 25%
<b>Preset Enlargement Dimensions (WxDxH)</b>	400%, 200%, 155%, 129%, 121% MP C3001/C3501: 26.4" x 26.5" x 30" (670 x 671 x 760mm) (standard configuration, does not include document feeder) MP C4501/C5501: 26.4" x 26.7" x 30" (670 x 677 x 760mm) (standard configuration, does not include document feeder)

<b>Weight</b>	MP C3001/C3501: < 264 lb. (120kg) w/ARDF MP C4501/C5501: < 287 lb. (130kg) w/ARDF MP C4501A/C5501A: < 293 lb. (133kg) w/SPDF
<b>Power Requirements</b>	120V – 127V, 60Hz
<b>Power Consumption</b>	1,584 Watts or less
<b>TEC Value</b>	MP C3001: 1620W/Wh MP C3501: 1830W/Wh MP C4501: 2630W/Wh MP C5501: 3510W/Wh
<b>Printer Controller Specifications (Standard)</b>	
<b>CPU</b>	MP C3001/C3501: Intel Celeron-M @ 600 MHz, Embedded MP C4501/C5501: Intel Celeron-M @ 1.0 GHz, Embedded
<b>Memory</b>	MP C3001/C3501: 1.5 GB RAM Standard/Maximum; 160 GB Hard Disk Drive MP C4501/C5501: 2 GB RAM Standard/Maximum; 160 GB Hard Disk Drive
<b>Max. Print Speed</b>	MP C3001: 30ppm BW & FC MP C3501: 35ppm BW & FC MP C4501: 45ppm BW & FC MP C5501: 55ppm BW & FC
<b>Print Drivers</b>	Standard: PCL 5c, PCL 6 (XL), XPS via download Optional: Adobe Postscript 3
<b>Font Support</b>	Standard: PCL: 45 Scalable, 6 Bitmapped + 13 International fonts Optional: PostScript 3: 136 Roman fonts, IPDS: 108 Roman fonts
<b>Max. Print Resolution</b>	1200 x 1200 dpi
<b>Network Interfaces</b>	Standard: 10BaseT/100Base-TX Ethernet (RJ-45), Dual USB 2.0 Host Interfaces (for external device connection), USB 2.0 Hi Speed (for direct PC/Mac connection) Optional: Gigabit Ethernet (1000Base-T) IEEE 802.11a/b/g Wireless Interface IEEE 1284/ECP Parallel Interface Front USB 2.0/SD Card Slot Interface
<b>Network Protocol Support</b>	TCP/IP (IPv4, IPv6), IPX/SPX
<b>Network/OS</b>	Windows 2000/XP/Vista/7/Server 2003/Server 2008/Server 2008R2, Mac OS X 10.2 or later, Novell NetWare 6.5, UNIX filters for Sun Solaris, HP-UX, SCO OpenServer, RedHat Linux, and IBM AIX, SAP R/3, NDPS Gateway, IBM iSeries – AS/400 using OS/400 Host Print Transform
<b>Utilities</b>	Web SmartDeviceMonitor SmartDeviceMonitor, Web Image Monitor, @Remote, Print Utility for Mac (w/Adobe PS3 option)
<b>Scanner Specifications (Standard)</b>	
<b>Scanner Resolution</b>	BW and FC scanning at 100 – 600 dpi, Up to 1200 dpi for TWAIN scanning only (BW/FC) Default Scan Resolution: 200 dpi
<b>Scanning Speed (Letter-size)</b>	MP C3001/C3501: 200dpi: 51ipm BW/FC; 300dpi: 47ipm BW / 41ipm FC MP C4501/C5501: 300dpi: 67ipm BW/FC MP C4501A/C5501A: 300dpi: 85-ipm BW/FC Simplex / 116-ipm BW/FC Duplex
<b>Scan Area</b>	Main Scan: 11.7" (297mm) Sub Scan: 17" (432mm)
<b>sRGB Support</b>	Standard
<b>Scan Mode</b>	BW Text/Line Art, BW Text, BW Text/Photo, BW Photo, BW Grayscale FC Photo, FC Text, Auto Color Selection (ACS)
<b>Compression Method</b>	BW: TIFF (MH, MR, MMR) Grayscale/FC Color: JPEG
<b>Supported File Formats</b>	Single/Multi-Page TIFF, Single Page JPEG Single/Multi-Page PDF, High Compression PDF
<b>Scan-to Modes</b>	Scan-to-Email (with LDAP support) Scan-to-Folder (SMB/FTP/NCP) Scan-to-URL

	Scan-to-Media (USB/SD Card) (requires option) Network TWAIN Scanning
<b>Document Server Specifications (Standard)</b>	
<b>Total Hard Disk Drive Capacity</b>	160 GB (Shared with other functions)
<b>Max. Stored Documents</b>	3,000 documents
<b>Max. Pages per Document</b>	2,000 pages
<b>Max. Page Capacity</b>	9,000 pages
<b>Facsimile Specifications (Optional)</b>	
<b>Type</b>	Fax Option Type C5501; Super G3 Transceiver
<b>Circuit</b>	PSTN, PBX
<b>Resolution</b>	200 x 100 dpi, 200 x 200 dpi, 400 x 400 dpi (with optional SAF memory)
<b>Modem Speed</b>	33.6K – 2,400 bps w/Auto Fallback
<b>Compression Method</b>	MH, MR, MMR, JBIG
<b>Transmission Speed</b>	G3: Approximately 2 seconds/page (w/JBIG); G3: Approximately 3 seconds/page (w/MMR)
<b>Scanning Speed (Letter LEF)</b>	MP C3001/C3501: 49ipm MP C4501/C5501: 68ipm MP C4501A/C5501A: 74ipm
<b>Auto Dialing</b>	2,000 Quick/Speed Dial numbers; 100 Group Dial numbers (500 locations per Group)
<b>Additional Fax Modes</b>	Internet Fax (T.37), IP Fax (T.38), LAN Fax, Fax Forwarding to E-mail/Folder, LDAP Support
<b>Memory Capacity (SAF)</b>	Standard: 4 MB (approx. 320 pages), Optional: 28 MB (approx. 2,240 pages) with optional SAF memory
<b>Additional Modes</b>	Internet Fax by E-mail (T.37); IP Fax (T.38); LAN Fax; Fax Forward to E-mail/Folder; LDAP Support
<b>Options</b>	Additional G3 Lines (up to 2); Fax SAF Memory; Telephone Handset
<b>Security Features (Standard)</b>	
	DataOverwriteSecurity System (DOSS), HDD Encryption, User Code Account Limits, Network Protocol On/Off, IP Filtering, SNMP v3 Support, Encryption (Address Book, Authentication Password, Locked Print Password, PDF, SSL Communication, S/MIME, IPsec Communication), Locked (Secure) Print, User Authentication (Windows/LDAP with Kerberos- External; Basic and User Codes- Internal), 802.1x Wired Authentication, WPA/WPA2 (Wi-Fi Protect Access Support), Classification Codes, and more
<b>Security Features (Optional)</b>	Copy Data Security, DataOverwriteSecurity System (DOSS) with ISO 15408 Common Criteria Certification
<b>Hardware Accessories</b>	
<b>Paper Handling Options</b>	
<b>Two-Tray Paper Bank (PB3100)<sup>1</sup> All Models</b>	
<b>Tray Capacity</b>	1,100 sheets (550 sheets x 2 trays)
<b>Paper Size</b>	5.8" x 8.3" to 11" x 17"
<b>Paper Weight</b>	16 – 68 lb. Bond/140 lb. Index (60 – 256 g/m <sup>2</sup> )
<b>Dimensions (WxDxH)</b>	22.8" x 24.4" x 10.2" (580 x 620 x 260mm)
<b>Weight</b>	Less than 57 lb. (26kg)
<b>One-Tray Paper Bank (PB3080)<sup>1</sup> MP C3001/C3501 only</b>	
<b>Tray Capacity</b>	550 sheets x 1 tray
<b>Paper Size</b>	5.8" x 8.3" to 11" x 17"
<b>Paper Weight</b>	16 – 68 lb. Bond/140 lb. Index (60 – 256 g/m <sup>2</sup> )
<b>Dimensions (WxDxH)</b>	22.8" x 24.4" x 4.7" (580 x 620 x 120mm)
<b>Weight</b>	Less than 33 lb. (15kg)
	Requires installation of Caster Table Type A
<b>Tandem Large Capacity Tray (PB3110)<sup>1</sup> All Models</b>	
<b>Tray Capacity</b>	2,000 sheets (1,000 sheets x 2)
<b>Paper Size</b>	8.5" x 11"
<b>Paper Weight</b>	16 – 68 lb. Bond/140 lb. Index (60 – 256 g/m <sup>2</sup> )
<b>Dimensions (WxDxH)</b>	22.8" x 24.4" x 10.2" (580 x 620 x 260mm)
<b>Weight</b>	Less than 57 lb. (26kg)
<b>FAC33 Cabinet Stand<sup>1</sup></b>	
	Installs under Standard Paper Trays and provides storage for paper, toner, etc.

# Ricoh Aficio MP C3001/C3501 and MP C4501/C5501

## System Specifications (continued)



### Side Large Capacity Tray (RT3010) All Models

Tray Capacity	1,200 sheets
Paper Size	8.5" x 11"
Paper Weight	16 – 58 lb. Bond/120 lb. Index (60 – 216 g/m <sup>2</sup> )
Dimensions (WxDxH)	13.7" x 21.3" x 11.4" (348 x 540 x 290mm)
Weight	Less than 31 lb. (14kg)

Requires Two-Tray Paper Bank (PB3100) or Tandem LCT (PB3110).

### Envelope Feeder (EF3000) All Models

Tray Capacity	550 sheets
Paper/Envelope Size	8.5" x 11", 7.25" x 10.5", 5.5" x 8.5", 4.125" x 9.5", 3.875" x 7.5", C5 Env, C6 Env, DL Env, Com10 Env
Paper/Envelope Weight	16 – 68 lb. Bond/140 lb. Index (60 – 256 g/m <sup>2</sup> )
Dimensions (WxDxH)	29.5" x 25.7" x 7.7" (750 x 654 x 195mm)
Weight	Less than 10.6 lb. (4.8kg)

Replaces Tray #2, or Tray 3/4 when configured with Two-Tray Paper Bank.

### Output Trays & Finisher Options

#### One Bin Tray (BN3080) All Models

Tray Capacity	125 sheets
Paper Size	5.5" x 8.5" to 11" x 17"
Paper Weight	16 – 45 lb. Bond/90 lb. Index (60 – 169 g/m <sup>2</sup> )
Dimensions (WxDxH)	22.2" x 16.1" x 4.5" (565 x 410 x 115mm)
Weight	Approx. 5.5 lb. (2.5kg)

#### Internal Shift-Sort Tray (SH3040) All Models

Tray Capacity	250 sheets (8.5" x 11" or smaller)
Paper Size	125 sheets (8.5" x 14" or larger)
Paper Weight	5.5" x 8.5" to 12" x 18"
Dimensions (WxDxH)	14 – 80 lb. Bond/110 lb. Cover (52 – 300 g/m <sup>2</sup> )
Weight	16.7" x 18.4" x 4.5" (423 x 468 x 114mm)
Weight	Less than 4.4 lb. (2kg)

Cannot be installed with any Finisher or Side Tray

#### Side Tray Type C5501 All Models

Tray Capacity	250 sheets (8.5" x 11" or smaller)
Paper Size	125 sheets (8.5" x 14" or larger)
Paper Weight	5.5" x 8.5" to 12" x 18"
Dimensions (WxDxH)	14 – 80 lb. Bond/165 lb. Index (52 – 300 g/m <sup>2</sup> )
Weight	30.7" x 16.2" x 5.4" (780 x 412 x 138mm)
Weight	Approx. 10 lb. (4.5kg)

Cannot be installed with any Finisher or Internal Shift-SortTray

#### 500-sheet Finisher (SR3050)<sup>2</sup> MP C3001/C3501 only

Paper Size	5.5" x 8.5" to 11" x 17"
Paper Weight	14 – 67 lb. Bond/140 lb. Index (52 – 253 g/m <sup>2</sup> )
Stack Capacity	500 sheets (8.5" x 11" or smaller)
Staple Paper Size	250 sheets (8.5" x 14" or larger)
Staple Paper Weight	8.5" x 11" to 11" x 17"
Staple Capacity	14 – 42 lb. Bond (52 – 157 g/m <sup>2</sup> )
Staple Positions	50 sheets (8.5" x 11")
Staple Cartridge Capacity	30 sheets (8.5" x 14" or larger, and/or Mixed Sizes)
Staple Positions	1 staple: 4 positions; 2 staples: 1 position

5,000 staples/cartridge

Dimensions (WxDxH) 15.6" x 21.7" x 10.9" (396 x 551 x 275mm)

Weight Approx. 26.5 lb. (12kg)

#### 1,000-sheet Finisher (SR790)<sup>2</sup> All Models

Paper Size	Proof Tray: 5.5" x 8.5" to 12" x 18"
Paper Weight	Shift Tray: 5.5" x 8.5" to 11" x 17"
Stack Capacity	Proof Tray: 14 – 68 lb. Bond/140 lb. Index (52 – 260g/m <sup>2</sup> )
Staple Paper Size	Shift Tray: 14 – 43 lb. Bond/90 lb. Index (52 – 163 g/m <sup>2</sup> )
Staple Paper Weight	Proof Tray: 250 sheets (8.5" x 11")
Staple Capacity	50 sheets (8.5" x 14" or larger)
Staple Positions	Shift Tray: 1,000 sheets (8.5" x 11")
Staple Cartridge Capacity	500 sheets (8.5" x 14" or larger)
Staple Positions	100 sheets (5.5" x 8.5")

Staple Capacity	50 sheets (8.5" x 11")
Staple Paper Sizes	30 sheets (8.5" x 14" or larger)
Staple Paper Weight	8.5" x 11" – 11" x 17"
Staple Positions	17 – 24 lb. Bond (64 – 90 g/m <sup>2</sup> )
Staple Cartridge Capacity	1 staple: 2 positions;
Dimensions (WxDxH)	2 staples: 1 position
Weight	5,000 staples/cartridge

10.7" x 20.5" x 31.2" (270 x 520 x 790mm)

Weight 55.2 lb. (25kg)

#### 1,000-sheet Booklet Finisher (SR3000)<sup>2</sup> MP C3001/C3501 only

Paper Size	Proof Tray: 5.5" x 8.5" to 11" x 17", 12" x 18"
Paper Weight	Shift Tray: 5.5" x 8.5" to 11" x 17", 12" x 18"
Stack Capacity	Booklet Tray: 8.5" x 11", 8.5" x 14", 11" x 17"
Staple Capacity	Proof Tray: 14 – 28 lb. Bond (52 – 105 g/m <sup>2</sup> )
Staple Paper Size	Shift Tray: 14 – 68 lb. Bond/140 lb. Index (52 – 256 g/m <sup>2</sup> )
Staple Paper Weight	Booklet Tray: 17 – 24 lb. Bond (64 – 90 g/m <sup>2</sup> )
Staple Positions	Proof Tray: 100 sheets (8.5" x 11" or smaller)
Staple Cartridge Capacity	50 sheets (8.5" x 14" or larger)
Staple Positions	Shift Tray: 1,000 sheets (8.5" x 11")
Staple Cartridge Capacity	500 sheets (8.5" x 14" or larger)
Staple Positions	100 sheets (5.5" x 8.5")
Staple Cartridge Capacity	Booklet Tray: 20 sets (2 – 5 sheets/set, all sizes, saddle-stitched) or 10 sets (6 – 10 sheets/set, all sizes, saddle-stitched)
Staple Positions	Normal Staple: 50 sheets (8.5" x 11")
Staple Cartridge Capacity	30 sheets (8.5" x 14" or larger)
Staple Positions	Saddle Stitch: 10 sheets (up to 40-page booklets)
Staple Cartridge Capacity	Normal Staple: 8.5" x 11" to 11" x 17"
Staple Positions	Saddle Stitch: 8.5" x 11", 8.5" x 14", 11" x 17"
Staple Cartridge Capacity	Staple Paper Weight: 17 – 24 lb. Bond (64 – 90 g/m <sup>2</sup> )
Staple Positions	1 staple: 2 positions;
Staple Cartridge Capacity	2 staples: 3 positions
Staple Positions	5,000 staples/cartridge

Optional; Installs inside Finisher Punch Paper Sizes: 5.5" x 8.5" to 11" x 17"

Punch Paper Weight: 14 – 43 lb. Bond /90 lb. Index (52 – 163 g/m<sup>2</sup>)

Dimensions (WxDxH) 21.1" x 23.7" x 36.7" (535 x 600 x 930mm)

Weight 105.9 lb. (48kg) w/o Punch Unit

110.3 lb. (50kg) with Punch Unit

2,000-sheet Booklet Finisher (SR3020)<sup>2</sup> MP C4501/C5501 only

Paper Size	Proof Tray: 5.5" x 8.5" to 11" x 17", 12" x 18"
Paper Weight	Shift Tray: 5.5" x 8.5" to 11" x 17", 12" x 18"
Stack Capacity	Booklet Tray: 8.5" x 11", 8.5" x 14", 11" x 17"
Staple Capacity	Proof Tray: 14 – 43 lb. Bond/90 lb. Index (52 – 163 g/m <sup>2</sup> )
Staple Paper Size	Shift Tray: 14 – 68 lb. Bond/140 lb. Index (52 – 256 g/m <sup>2</sup> )
Staple Paper Weight	Booklet Tray: 17 – 24 lb. Bond (64 – 90 g/m <sup>2</sup> )
Staple Positions	Proof Tray: 250 sheets (8.5" x 11" or smaller)
Staple Cartridge Capacity	50 sheets (8.5" x 14" or larger)
Staple Positions	Shift Tray: 2,000 sheets (8.5" x 11" or smaller)
Staple Cartridge Capacity	1,000 sheets (8.5" x 14" or larger)
Staple Positions	500 sheets (5.5" x 8.5")
Staple Cartridge Capacity	Booklet Tray: 30 sets (2 – 5 sheets/set, all sizes, saddle-stitched) or 15 sets (6 – 10 sheets/set, all sizes, saddle-stitched) or 10 sets (11 – 15 sheets/set, all sizes, saddle-stitched)
Staple Positions	

Optional; Installs inside Finisher Punch Paper Sizes: 5.5" x 8.5" to 11" x 17"

Punch Paper Weight: 14 – 43 lb. Bond /90 lb. Index (52 – 163 g/m<sup>2</sup>)

Dimensions (WxDxH) 21.1" x 23.7" x 36.7" (535 x 600 x 930mm)

Weight 105.9 lb. (48kg) w/o Punch Unit

110.3 lb. (50kg) with Punch Unit

Staple Capacity	Normal Staple: 50 sheets (8.5" x 11")
Staple Paper Sizes	30 sheets (8.5" x 14" or larger and/or Mixed Sizes)
Staple Paper Weight	Saddle Stitch: 15 sheets (up to 60-page booklets)
Staple Positions	Normal Staple: 8.5" x 11" to 11" x 17"
Staple Cartridge Capacity	Saddle Stitch: 8.5" x 11", 8.5" x 14", 11" x 17"
Staple Positions	17 – 24 lb. Bond (64 – 90 g/m <sup>2</sup> )
Staple Cartridge Capacity	1 staple: 3 positions;
Staple Positions	2 staples: 2 positions
Staple Cartridge Capacity	Normal Staple: 5,000 staples/cartridge
Staple Positions	Saddle Stitch: 2,000 staples/cartridge
Staple Cartridge Capacity	Optional; Installs inside Booklet Finisher
Staple Positions	Punch Paper Sizes: 5.5" x 8.5" to 11" x 17"
Staple Cartridge Capacity	Punch Paper Weight: 14 – 43 lb. Bond /90 lb. Index (52 – 163 g/m <sup>2</sup> )
Staple Positions	143.3 lb. (65kg) with Punch Unit

Dimensions (WxDxH) 25.8" x 24.2" x 37.8" (657 x 613 x 960mm)

Weight 138.9 lb. (63kg) w/o Punch Unit

143.3 lb. (65kg) with Punch Unit

3,000-sheet Finisher (SR3030)<sup>2</sup> MP C4501/C5501 only

Paper Size	Proof Tray: 5.5" x 8.5" to 11" x 17", 12" x 18"
Paper Weight	Shift Tray: 5.5" x 8.5" to 11" x 17", 12" x 18"
Stack Capacity	Proof Tray: 14 – 43 lb. Bond/90 lb. Index (52 – 163 g/m <sup>2</sup> )
Staple Capacity	Shift Tray: 14 – 68 lb. Bond/140 lb. Index (52 – 256 g/m <sup>2</sup> )
Staple Paper Size	Proof Tray: 250 sheets (8.5" x 11" or smaller)
Staple Paper Weight	50 sheets (8.5" x 14" or larger)
Staple Positions	Shift Tray: 3,000 sheets (8.5" x 11")
Staple Cartridge Capacity	1,500 sheets (8.5" x 14" or larger)
Staple Positions	500 sheets (5.5" x 8.5")
Staple Cartridge Capacity	50 sheets (8.5" x 11")
Staple Positions	30 sheets (8.5" x 14" or larger and/or Mixed Sizes)
Staple Cartridge Capacity	8.5" x 11" to 11" x 17"
Staple Positions	17 – 24 lb. Bond (64 – 90 g/m <sup>2</sup> )
Staple Cartridge Capacity	1 staple: 3 positions;
Staple Positions	2 staples: 1 position
Staple Cartridge Capacity	5,000 staples/cartridge

Optional; Installs inside Finisher Punch Paper Sizes: 5.5" x 8.5" to 11" x 17"

Punch Paper Weight: 14 – 43 lb. Bond /90 lb. Index (52 – 163 g/m<sup>2</sup>)

Dimensions (WxDxH) 25.8" x 24.2" x 37.8" (657 x 613 x 960mm)

Weight 119 lb. (54kg) w/o Punch Unit

123.5 lb. (56kg) with Punch Unit

### Additional Accessories

File Format Converter, Key Counter Bracket, Platen Cover, Counter Interface, USB 2.0/SD Slot (for scan-to and print from removable media), Camera Direct Print Card, Scanner Accessibility Option (MP C4501/C5501 only), ADF Handle (MP C3001/C3501 only), IPDS Unit, HotSpot Printing Kit, Fiery™ Print Controller (available Q1 2011)

### Consumables

Item	MP C3001/C3501 Yield*	MP C4501/C5501 Yield*
Black Toner	22,500 pages	25,500 pages
Cyan Toner	16,000 pages	18,000 pages
Magenta Toner	16,000 pages	18,000 pages
Yellow Toner	16,000 pages	18,000 pages

\*Yields calculated based on 5% image coverage. Black toner yields reduced by 1,500 pages when configured with Fiery™ Controller.

MP C4501A/C5501A available Q1 2011

<sup>1</sup>Either the Cabinet Stand or one of the paper options must be installed.

<sup>2</sup>Requires configuration with Bridge Unit.

<sup>3</sup>Not available on MPC4501A/C5501A.



# RICOH

www.ricoh-usa.com

Bringing Ricoh Value to Your Organization

Ricoh technology offers a diverse portfolio of solutions to help your organization stay competitive and move ahead. Let Ricoh show you how to empower your business to improve critical processes, keep information secure, ensure compliance and promote environmental sustainability while reducing the total cost of ownership.

Ricoh Americas Corporation, Five Dedrick Place, West Caldwell, NJ 07006  
 Ricoh® and the Ricoh Logo are registered trademarks of Ricoh Company, Ltd. All other trademarks are the property of their respective owners. Print speed may be affected by network, application or PC performance. Specifications and external appearances are subject to change without notice. Products are shown with optional features.