

TASKalfa 520i/420i

Black & White Multifunctional Systems

EVERY DOCUMENT. EVERY TASK. EVERY TIME.



TASKalfa 520i and 420i | Black & White Multifunctional Systems

The Kyocera **TASKalfa 520i /420i** Black & White Multifunctional Systems deliver the **performance, versatility** and **ultra-reliability** you demand from a document imaging system, all in a bold, sleek design.

A powerful combination of fast and efficient output speeds up to 52 ppm, Kyocera's unique long life technology and innovative features, such as **full color scanning** and **USB host interface**, make the TASKalfa 520i/420i essential to all your document imaging tasks. MFP performance can be further optimized with **HyPAS™**, Kyocera's unique, powerful and scalable software solutions platform. HyPAS delivers a broad range of options that enable the TASKalfa 520i/420i to seamlessly integrate with widely accepted software applications and operate in virtually any business environment.

With their sleek design, proven reliability and superior engineering, the TASKalfa 520i/420i provide the **exceptional performance and functionality** that makes a difference, day-in and day-out.

Only from Kyocera

Since 1959, Kyocera has successfully developed innovative technologies that have helped set industry standards for engineering and quality. In the field of document imaging, Kyocera Mita Corporation is a well-known and respected provider of leading-edge multifunctional products, laser printers, as well as software and network solutions to organizations of all sizes and specializations. Our award-winning technology incorporates long life imaging components that can dramatically lower your total cost while providing the high productivity and exceptional image quality that your business demands. Kyocera continually strives to raise the bar for excellence in both products and service including:

- **Award-winning ultra-reliability**
- **Easy-to-use technology**
- **Environmentally friendly devices**
- **High standards of integrity**
- **Commitment to quality control**
- **Unsurpassed performance**



Working Overtime to Deliver Results

HIGH PERFORMANCE PLUS HIGH END DESIGN

- **Color Scanning.** Standard color scanning expands the boundaries of the traditional black & white MFP and ensures efficient document sharing and distribution. With resolutions of up to 600 x 600 dpi and multiple file formats supported including PDF, TIFF, JPEG and XPS your scanned documents will remain true to the original.
- **High Capacity Toner.** Utilizing a high capacity consumable eliminates the need for frequent toner replacement. At an impressive 34,000 pages (based on 6% coverage), these TASKalfa MFPs will enable your business to realize the highest in performance standards.
- **Long Preventive Maintenance Intervals.** Set at an incredible 500,000 pages and recognized as one of the highest preventive maintenance intervals in the industry, you will experience reduced downtime and increased productivity due to less frequent routine maintenance and care.
- **HyPAS.** Kyocera's Hybrid Platform for Advanced Solutions, or HyPAS, will allow your business to optimize the TASKalfa 520i/420i with powerful integrated solutions designed to boost your business activities. HyPAS delivers a broad range of options that enable these MFPs to seamlessly integrate with widely accepted software applications and operate in virtually any environment.

CONNECT YOUR ENTERPRISE

Your company is always looking to get the most out of every investment, and incorporating an advanced multifunctional within your infrastructure is a challenge that every business faces. These MFPs are designed to meet the evolving demands and multiple layers of technology that makes your company run.

With proven technology, advanced features, and innovative solutions, the moment you connect the TASKalfa 520i/420i to your network, your business will be able to perform better and smarter, in every facet of your daily workflow.



The user-friendly 8.5" color touch screen control panel provides advanced document handling and functionality at your fingertips.

RELIABILITY AT ITS BEST

Your business is your top priority and you demand uncompromising dependability across your entire enterprise. The TASKalfa 520i/420i deliver a winning solution for all your critical document imaging requirements. Built on one of the most reliable engines the industry has ever known, these exceptional black & white MFPs are engineered for high performance in your workplace, where it matters most.

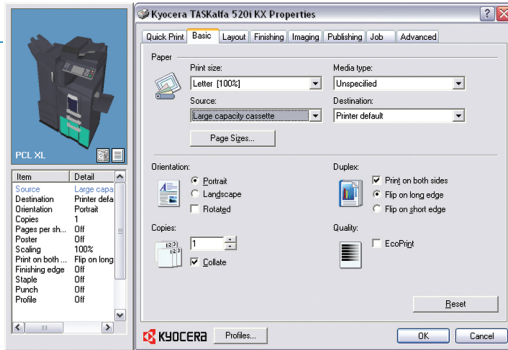
These ultra-reliable MFPs incorporate long life consumables, an impressive maximum monthly volume set at 200,000 pages and an industry-leading preventive maintenance interval to maximize uptime. Additionally, Kyocera's patented Amorphous Silicon drum technology, with a rated yield of 500,000 pages proves to be a highly durable imaging system capable of handling any busy work environment.

It's ultra-reliability at its best!

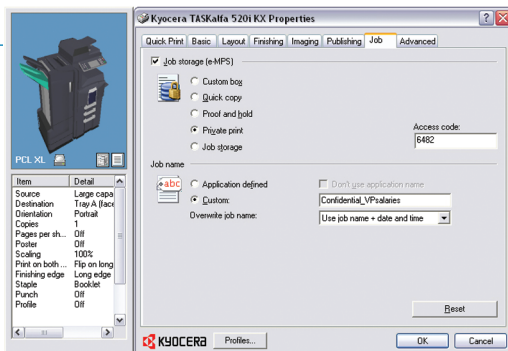
POWER AND CONTROL AT THE DESKTOP

From presentations to flyers, booklets and more, count on the TASKalfa 520i/420i to deliver professional output for all your business needs. Kyocera's advanced **KX Driver** allows users to take full advantage of the robust features integrated into each TASKalfa MFP from one common print driver.

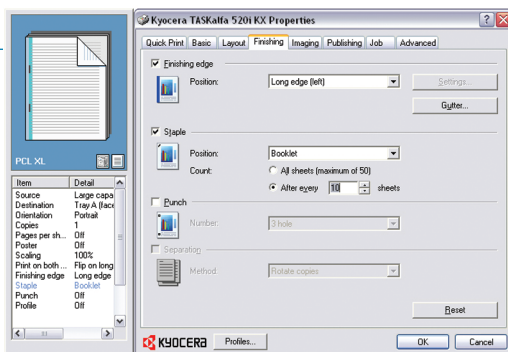
The **KX Driver** gives you instant access to commonly used print features from one user-friendly screen. Easily select paper types and sources, as well as output features such as page orientation, number of copies, duplexing and EcoPrint.



KX Driver's Job Tab provides enhanced security and control, with features such as job storage for secure on-demand printing of frequently needed documents. Private print ensures confidential printing by requiring entry of a pin code at the device. You can also preview jobs with multiple finishing attributes prior to printing using the driver's proof and hold capability.



Use the **KX Driver's Finishing Tab** to customize your output. Select from diverse features including 2/3 hole punch, stapling including sub-set stapling, and more.



FLEXIBILITY TO GROW WITH YOUR BUSINESS



Optional 1,000 Sheet Finisher

- Multi-Position Staple
- Document Sorting
- 16 lb – 34 lb Bond



Optional 3,000 Sheet Finisher

- Multi-Position Staple
- Optional 2 and 3 Hole Punch
- 16 lb Bond – 110 lb Index



Optional Fax/Network Fax

- Add Up to Two G3 Fax Systems
- Internet Fax Kit Available



7 Bin Mailbox for 3,000 Sheet Finisher

- Output Sorting – Up to 7 Individual Mailboxes
- 16 lb Bond – 90 lb Index

Power, Performance, Flexibility



DEMANDS



Two Document Processor Options

- 100 Sheet Dual Scan Document Processor with scan speeds up to 100 images per minute
- 100 Sheet Reversing Automatic Document Processor with scan speeds up to 75 images per minute



Dual 500 Sheet Trays

- Statement to Ledger Sized Sheets
- 16 lb – 90 lb Bond



Optional Booklet Folder for 3,000 Sheet Finisher

- Folding up to 16 Sheets
- Saddle Stitch
- Letter, Legal, or Ledger Sized Booklets
- 16 lb Bond – 110 lb Index



3,000 Sheet Large Capacity Tray

- Letter Sized Sheets
- 16 - 28 lb Bond

PERFORMANCE WHEN IT MATTERS MOST

- Optional Dual Scan Document Processor** – At less than one second per page, its dual scan capability dramatically improves your productivity and handles mixed originals with ease for a powerful scanning solution in both full color and black & white.
- Robust Finishing** – Advanced finishing options include multi-position stapling, 2/3 hole punch, multi-tray, and booklet folding for professional finishing in-house.
- Versatile Paper Handling** – With options including a 3,000 sheet large capacity tray and dual 500 sheet paper drawers, the standard 1,200 sheet paper capacity can be dramatically enhanced depending on your business requirements.
- High Yield Consumables** – High capacity toner and long life Amorphous Silicon (ASi) drum technology combine to deliver an exceptionally durable imaging system.
Toner Yield: 34,000 pages @ 6% coverage
Drum Yield: 500,000 pages
- Intelligent Multi-Purpose Tray** – A standard 200 sheet multi-purpose tray (MPT) automatically recognizes paper sizes and can handle mixed media types, from statement to ledger, and up to 110 lb Index for your special jobs such as covers and inserts.
- Color Touch Screen Control Panel** – Hard key and touch screen access provide robust document handling and ease of use at your fingertips.
- On-board Document Storage** – TASKalfa's unique on-board Document Box offers a simple way for you to store, secure and access critical documents at the device.
- Advanced USB Host Interface** – Conveniently print-from (black & white) and scan-to (color or black & white) any USB drive right from the touch screen control panel in PDF, JPEG, TIFF and XPS file formats.
- Optional Fax** – Add up to two optional G3 fax systems for one space-saving footprint. The standard multi-send feature combines fax and scanning for a truly efficient communication device.
- HyPAS Software Solution Platform** – Through integration with widely accepted software applications, HyPAS will enhance your specific document imaging needs resulting in improved information sharing, resource optimization and document workflows.

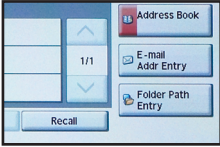
HyPAS™



Leverage the Full Potential of Your TASKalfa MFP

SCAN AND SEND EFFICIENTLY

The ability to communicate and share documents effectively and securely allows everyone in your company to be more productive and cost efficient. The TASKalfa 520i/420i high quality color scan capabilities and advanced USB host interface deliver an array of options for all your document scanning and sharing needs. Full color PDF, JPEG, TIFF and XPS files, as well as black & white PDF and TIFF files, can be sent quickly and securely across your network.



Multiple "Scan-to" Locations

Whether your priority is for the highest scan quality or the smallest file size, the TASKalfa 520i/420i can be set to fit your infrastructure. Standard scanning capabilities include:

- Scan to e-mail, Scan to Folder (SMB), Scan to FTP, Scan to USB, WSD Scanning (Windows® Vista), TWAIN Scanning
- 200 - 600 dpi resolution
- High compression PDF scanning
- Password protection and encryption directly from the touch screen control panel



"Documents on the Go"

Typical scan-to locations, such as scan to folder and e-mail, are key methods of document sharing and distribution in most office environments, but what if your business demands more? With the standard USB Host Interface you have true document portability!

- Scan hardcopy originals conveniently and efficiently from the document processor option that best suits your business requirements
- Save as PDF, JPEG, TIFF, and XPS file formats directly to a portable USB drive
- Ensure higher levels of security for sensitive information

TRANSFORM YOUR MFP WITH HyPAS

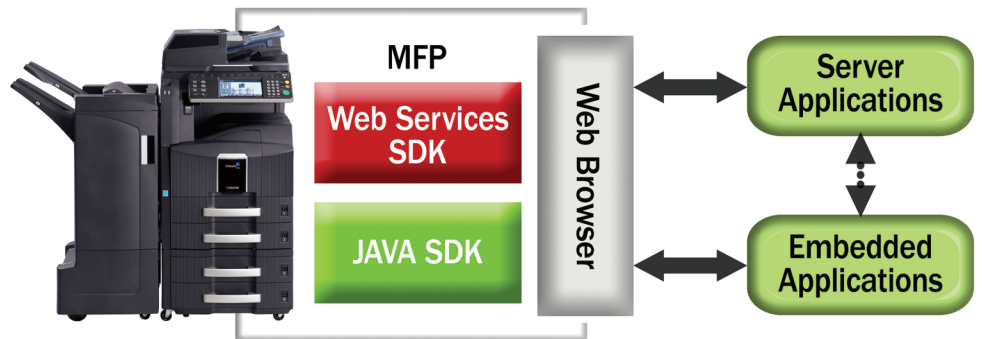
Kyocera's HyPAS (Hybrid Platform for Advanced Solutions), a powerful and scalable software solution platform, optimizes the performance of Kyocera's MFPs through custom, integrated software applications. HyPAS is unique in that it offers both Java-based and Web Services-based Software Development Kits (SDKs), providing a more open and flexible platform; enabling advanced integration with systems that are already implemented in the enterprise.

Utilizing Two Key Technologies

Java™, a programming language that is commonly used for mobile applications, such as cell-phones, provides the capability to embed features and applications within the document imaging device itself. By embedding Java applications within Kyocera MFPs, an existing feature set can be extended with more advanced, feature-rich, server-less capabilities, delivering seamless integration and advanced control capability.

Web Services applications provide system integrators with flexibility and interoperability because they can be implemented on a wide range of platforms and using almost any programming language. In addition, using Web Services SDKs, Kyocera MFPs can communicate with other advanced hardware devices which are Web Services-enabled devices such as Apple's iPhone or iPod Touch.

By combining these two technologies, HyPAS delivers expanded versatility and capability to companies, allowing for the quick delivery of solutions that seamlessly integrate with select Kyocera MFPs.



Kyocera's Suite of HyPAS-enabled applications are:

- **KYOcapture powered by AutoStore**
Kyocera's solution to Capture, Process and Route your Content
- **AccessLock**
Allows organizations to offer the use of device functions based on parameters set by the network administrators
- **PrintQ Manager**
Enables Windows users more advanced print management and security benefits
- **Equitrac**
Embedded Equitrac solution provides simplified print/copy tracking and cost recovery
- **Open Text Fax Server, RightFax Edition**
Kyocera offers advanced integration with RightFax; giving users the ability to scan/send documents via the RightFax server

Kyocera Solutions to Maximize Performance

DOCUMENT CREATION & OUTPUT



Printing the business documents you create and use everyday is essential for effective communication, both inside and outside your company. Kyocera's Solutions for Document Creation & Output improve workplace productivity and efficiency. Kyocera's native page description language, **PRESCRIBE**[®], offers your business a flexible, on-demand printing solution for forms, letterhead and similar corporate documents. PRESCRIBE eliminates the cost and storage space associated with preprinted forms.

Enhance your Windows desktop through Kyocera's unique **KX Driver** and **PDF Direct Print** for fast printing and full access to device features. Another robust output feature is **Kyocera's USB Host Interface**. At the control panel, users can print-from, and scan-to, a USB drive inserted into the device, for secure output time after time.

SECURITY & COMPLIANCE



Securing your business assets and maintaining confidentiality of data is a growing strategic initiative for many companies. Kyocera's Solutions addressing Security & Compliance are incredibly flexible to fit the needs of your diverse network and your company's printing, copying or scanning requirements.

Kyocera provides a range of optional security solutions: Our **Data Security Kit** ensures your business critical information is never compromised; device printing features such as **Secure Print and Virtual Mailbox** requires passwords to enable output directly at the device, and the KX Driver allows you to add a **Security Watermark** to your documents to deter unauthorized copying. Kyocera's server-based **PrintQ Manager Secure Job Release** allows users to access their secured documents stored at a server from any PrintQ-enabled TASKalfa MFP; and for businesses and organizations instituting **IPv6** (Internet Protocol version 6) to their infrastructure, an IPv6-compliant network interface for Kyocera Printers and MFPs ensures compliance and security standards can be met.

DOCUMENT MANAGEMENT



Scanning, routing, archiving and retrieving documents streamline any company's workflow. The TASKalfa 520i/420i provide your business with easy-to-use scan features, while also offering more robust Document Management solutions such as our **KYOcapture** and **KYOcapture Express**. KYOcapture integrates with many of the industry's best recognized document management systems such as SentryFile, LaserFiche[®], Documentum[®], SharePoint[®] and more.

For businesses requiring 'on-demand' access of documents at the MFP, Kyocera's **Document Box** is a critical feature that allows users to scan-to, and print-from, the hard drive of your MFP.

Kyocera's Document Management Solutions are scalable and flexible for your business, delivering a solution that fits your company's requirements today, and an upgrade path for your growing requirements tomorrow.

NETWORK & DEVICE MANAGEMENT



Kyocera's suite of Network & Device Management Solutions provides your IT infrastructure with the essential tools it needs to manage and maintain your output devices, keeping your operation running efficiently. This comprehensive set of value-added utilities and software includes the PC-based **KMnet Viewer** and web-based **KMnet Admin** for device management, cost control and department accounting; and **PrintQ Manager**, a device management solution that incorporates print queue monitoring and server-based security for output of documents.

Equitrac, a leading cost accounting and recovery software, integrates as an embedded solution. Both *Equitrac Express* and *Equitrac Office* are available to simplify print/copy tracking, enforce color output quotas, provide accurate document cost control, and much more.

CREATING PROACTIVE BUSINESS SOLUTIONS WHILE WORKING TO KEEP THE FUTURE GREEN

Kyocera is committed to pursuing a harmonious balance between economic development and environmental preservation. We adhere to the goals of our worldwide Environmental Action Plan in developing office solutions with environmentally friendly and superior energy- and supply-saving features, without compromising your productivity.

- Long Life Components and Consumables
- Energy Star Compliant
- Restriction of Hazardous Substances (RoHS) Compliant
- Fast Warm-up Time



- Power-Saving Sleep Mode
- Duplex and Combine Copy Modes
- Low Noise Levels
- Minimal Ozone Emissions

Kyocera Mita America was awarded the 2008 Excellence in Partnership (EIP) award for Industry Green Contractor from the U.S. Government's General Services Administration (GSA) in recognition for its environmental commitment. The GSA Integrated Workplace Acquisition Center (IWAC), in the category of technologies and electronics, also recognized Kyocera with the Evergreen Award as an environmentally conscious business with strong efforts in recycling, affirmative procurement, and waste reduction. Additionally, our U.S. facility's Environmental Management System (EMS) has achieved ISO14001:2004 certification, which distinguishes corporations that effectively manage how their activities, products and services impact the environment.



TASKalfa 520i/420i



Shown with Optional DSDP, 500 x 2 Tray, and 3,000 Sheet Finisher
50.7" W x 25.5" D x 48.9" H



Shown with Optional DSDP, 500 x 2 Tray, and 1,000 Sheet Finisher
48.6" W x 25.5" D x 48.9" H



Shown with Optional DSDP and 3,000 Sheet LCT
23.6" W x 25.5" D x 48.9" H



Color Touch Screen Control Panel
Screen Dimensions: 8.5 inches

HyPAS™

Hybrid Platform for Advanced Solutions

Basic Specifications

Configuration	Black & White Multifunctional Systems - Print/Scan/Copy/Optional Fax
Pages Per Minute	TASKalfa 520i - Letter: 52 ppm / Legal: 26 ppm / Ledger: 26 ppm TASKalfa 420i - Letter: 42 ppm / Legal: 23 ppm / Ledger: 23 ppm
Warm-up Time	30 Seconds or Less
First Copy / Print Out Time	3.9 Seconds / 4.8 Seconds
Resolution	600 x 600 dpi
Memory / Hard Disk Drive	2 GB RAM / 160 GB HDD
Duplex	Standard Stackless, Statement to Ledger, 16 - 20 lb Bond
Electrical Requirements / Weight	120V, 60Hz, 12A / 187.4 lbs (mainframe only)
Maximum Monthly Volume	TASKalfa 520i - 200,000 Pages Per Month TASKalfa 420i - 150,000 Pages Per Month

Paper Supply

Standard Paper Sources	Dual 500 Sheet Drawers, 200 Sheet MPT; Auto Selection / Switching, Add Paper While Running
Optional Paper Sources	500 x 2 Dual Paper Drawers PF-720(B) ; 3,000 Sheet Large Capacity Tray PF-760(B)
Paper Capacity	Standard: 1,200 Sheets; Maximum: 4,200 Sheets
Paper Size	5.5" x 8.5" - 11" x 17"
Paper Weight	Standard Trays, PF-760(B): 16 - 28 lb Bond; MPT: 12 lb Bond - 110 lb Index; PF-720(B): 16 lb Bond - 90 lb Index
Input Materials	Bond Paper, Recycled Paper, Transparencies, Cardstock, Envelopes

Printer Specifications

Controller	PowerPC 750FL / 600MHz
PDLs/Emulations	PRESCRIBE, PCL6 (5e, XL), KPDL3 (PS3)
Fonts	136 KPDL3, 93 PCL6, 8 Windows Vista, 1 Bitmap
Windows OS Compatibility	Windows 2000/XP/2003/Vista/2008/Windows 7
Novell OS Compatibility	Novell NetWare 3.x/4.x/5.x/6.x
Mac OS Compatibility	Mac OS 10.x
UNIX OS Compatibility	Sun OS 4.1.x; Solaris 2.x; AIX; HP-UX 9(LPR)
Interfaces	Standard: 10/100BaseTX, Hi-Speed USB 2.0, USB Host Interface, 2 Expansion Slots
Network Print and Supported Protocols	TCP/IP (IPv4, IPv6, IPsec, SSL, HTTPS), IPX/SPX, AppleTalk, NetBEUI
Drivers	KX Driver, Mini Driver, KX Driver for XPS, XPS Mini Driver, Network Fax Driver, PPD for Mac
Utilities	PDF Direct Print, KMnet Admin, KMnet for Accounting, KMnet Viewer

Scan Specifications

Scan Resolutions	200, 300, 400, 600 dpi
File Formats	Black: PDF, TIFF; Color: PDF, JPEG, TIFF, XPS
PDF Extension	High Compression PDF, Encrypted PDF
Connectivity / Supported Protocols	10/100BaseTX / TCP/IP
Scanning Functions	Scan to SMB, Scan to e-Mail, Scan to FTP, Scan to USB, WSD Scan, TWAIN Scan

Copy Specifications

Image Mode	Text, Photo, Text/Photo, Auto, Manual, Map
Continuous Copy	1 - 999 / Auto Reset to 1
Additional Features	Positive/Negative Reverse, Mirror Image, Rotate Copy, Border Erase, Split Copy, Electronic Sort, Margin Shift
Job Management	Job Interrupt, Job Build, 10 Job Programs, Repeat Copy, 1,000 Department Codes
Magnification / Zoom	Full Size, 5 Reduction, 5 Enlargement Preset Ratios, 25 - 400% in 1 step increments, XY Zoom
Document Box	Custom Box, Job Box, Removable Memory Box, Fax Box (with optional Fax System)

Fax Specifications

Fax / Network Fax Option	Fax System(S) / Internet Fax Kit(A) (requires Fax System(S))
Compatibility	Super G3 Fax
Fax Memory	Standard: 12 MB; Maximum: 120 MB
Fax Functions	Duplex TX/RX, Confidential RX/TX, F-Code RX/TX, Broadcasting, Fax Box, Fax Block, Dual Fax

Optional Document Processors **DP-760(B)** or **DP-750(B)**

Type / Capacity	DP-760(B) Dual Scan Document Processor / 100 Sheets DP-750(B) Reversing Automatic Document Processor / 100 Sheets
DSDP Scan Speed DP-760(B)	Simplex: 75 ipm / Duplex: 100 ipm (300 dpi)
RADF Scan Speed DP-750(B)	Simplex: 75 ipm / Duplex: 45 ipm (300 dpi)
Acceptable Originals/Weights	5.5" x 8.5" - 11" x 17", Mixed Size Originals / 9 - 42 lb Bond

Optional 3,000 Sheet Finisher **DF-760(B)**

Stack / Staple Capacity	Main Tray: 3,000 Sheets; Sub Tray(B): 200 Sheets; Sub Tray(C): 50 Sheets
Paper Size	Main Tray: 8.5" x 11" - 11" x 17"; Sub Tray(B): 5.5" x 8.5" - 11" x 17"; Sub Tray(C): 8.5" x 11"
Paper Weight	Main Tray: 16 lb Bond - 90 lb Index Duplex; 16 lb Bond - 110 lb Index Simplex; Sub Tray (B/C): 12 lb Bond - 90 lb Index
Edge Staple Position	3 Positions: Top Left, Bottom Left, Center Bind
Optional Multi-Bin Mailbox	MT-720(B) Includes 7 Trays; Supports 16 lb Bond - 90 lb Index Stack Capacity per Bin: 100 Sheets: 5.5" x 8.5", 8.5" x 11"; 50 Sheets: 8.5" x 14", 11" x 17"
Optional Punch	PH-5A 2 and 3 Hole Punch Unit, Supports 8.5" x 11" - 11" x 17", 16 - 110 lb Index
Optional Saddle Stitch / Fold	BF-720 Supports 8.5" x 11", 8.5" x 14", 11" x 17", 16 lb Bond - 110 lb Index; Over 24 lb Bond Single Sheet

Optional 1,000 Sheet Finisher **DF-780(B)**

Stack / Staple Capacity	1,000 Sheets / 50 Sheets: 8.5" x 11"; 25 Sheets: 8.5" x 14", 11" x 17"
Paper Size / Weight	8.5" x 11" - 11" x 17" / 16 - 34 lb Bond
Edge Staple Position	3 Positions: Top Left, Bottom Left, 2 Point Long Edge
Optional Internal Finisher DF-720(B)	
Stack/Staple Capacity	500 Sheets / 30 Sheets: 8.5" x 11"; 20 Sheets: 8.5" x 14", 11" x 17"
Paper Size / Weight	8.5" x 11" - 11" x 17" / 16 - 21 lb Bond
Edge Staple Position	1 Position

Additional Options

KYOcapture, KYOcapture Express, Fax Memory, Platen Cover, Job Separator **JS-700(B)**, Attachment Kit **AK-700**, Stand, Data Security Kit (E) - Security Overwrite and Encryption for Print/Copy/Scan, Printed Document Guard Kit (A)

Specifications and design are subject to change without notice.
For the latest on connectivity visit www.kyoceramita.com
All trademarks are the property of their respective owners.



Kyocera Mita America, Inc. Headquarters: 225 Sand Road, Fairfield, NJ 07004-0008, USA
©2009 Kyocera Mita America, Inc.

IC# 855D400248



PowerPC™

